



## Visiting Worth School for Sports Fixtures

We look forward to welcoming you to Worth and hope this information will help make your visit an enjoyable one. Our sports web portal [www.worthschoolsport.org.uk](http://www.worthschoolsport.org.uk) has a 'Sports Map' tab that will provide visitors with exact details of the various sporting venues around the school.

The School address is:  
Paddockhurst Road  
Turners Hill  
West Sussex  
RH10 4SD.

You may find this link useful: <http://www.worthschool.org.uk/Directions-to-Worth>

### Useful Phone Numbers:

- Main School Office: 01342 710200
- Sports Office: 01342 711534
- Director of Sport (David Burton) 07970 785339
- Assistant Director of Sport (Siobhan Isaacs) 07748 900085
- Head of Rugby (Tom Richardson) 01342 711534
- Head of Hockey (Simon Faulkner) 07817 410438.
- Head of Cricket (Raj Chaudhuri) 01342 711534
- Head of Netball (Jo Barnes) 07495 280413
- Head of Tennis (Joey Hall-Palmer) 01342 711534
- Head of Football (Clement Donegan) 01342 710256.
- Master in Charge of Squash (Jeremy Dowling)
- Head of Athletics and Basketball (Alan Mitchell) 07572 155078
- Master in Charge of Fencing (Barry More) 07934 844409
- School Medical Centre 01342 710245

### Teams arriving at Worth.

All visiting coaches/minibuses should enter via the main school entrance. Coach drop off and parking is available in the designated bays on Malus Avenue (see site map) and this is where visiting coaches will be met. Coaches/Minibuses should not use the Abbey entrance or car park. Hockey and tennis arriving in minibuses may go directly to the astro.

### Car Parking

Visitor parking is available at the following areas:

- Main school pitches
- Abbey Car Park
- Astro
- Cowdray (limited spaces)
- Main School reception (Front Quad)

Please note that visitors are asked not to park on any internal roads around the school as this restricts access for emergency and other vehicles.

### **Changing:**

Changing rooms are located at the Sports Hall and Old Austin for teams using the main pitches. Visiting teams requiring changing facilities will be met at Malus Avenue and directed to the appropriate changing area. There are changing facilities at the astro pavilion, but no showers.

### **Main School Fields**

Rugby, Senior and Colts Cricket matches take place at the main school fields. Parking is available at the fields for parents/visitors. There is room for minibuses but not coaches.

#### **School Road Crossing Policy**

**Please note that all visitors (players, staff and visiting supporters) must use the footbridge when crossing Paddockhurst Road on foot. We would be grateful if you could pass this information to all relevant parties.**

### **Cowdray Pitches**

Lent Term Football and occasional other matches take place at the Cowdray pitches which are a ten minute walk from school. Limited parking is available at these pitches. Visitors are asked not to park on the grass verge on the main road or in the Cowdray Arms Public House car park.

### **Tennis and Hockey**

The tennis courts and astro are located in the lower grounds of the school on the main school site (see site map below). Junior cricket matches use the Austin Oval, also located in this area. There is car parking at the astro.

### **Toilets**

Toilet facilities are located in the pitch side pavilion, Austin Pavilion (next to the astro) and the Main School building reception area. Please note there are no toilet facilities at the Cowdray pitches.

### **First Aid.**

For all rugby matches we are very grateful for the Paramedic First Aid cover. In support of this provision the School Medical Centre is staffed with qualified nurses and all Worth sports staff are first aid trained. It is reasonably expected that visiting teams will be accompanied by staff that are first aid trained and have First Aid bags.

### **Hospitality**

Refreshments are available for parents and visitors before matches at the main pavilion and Austin pavilion.

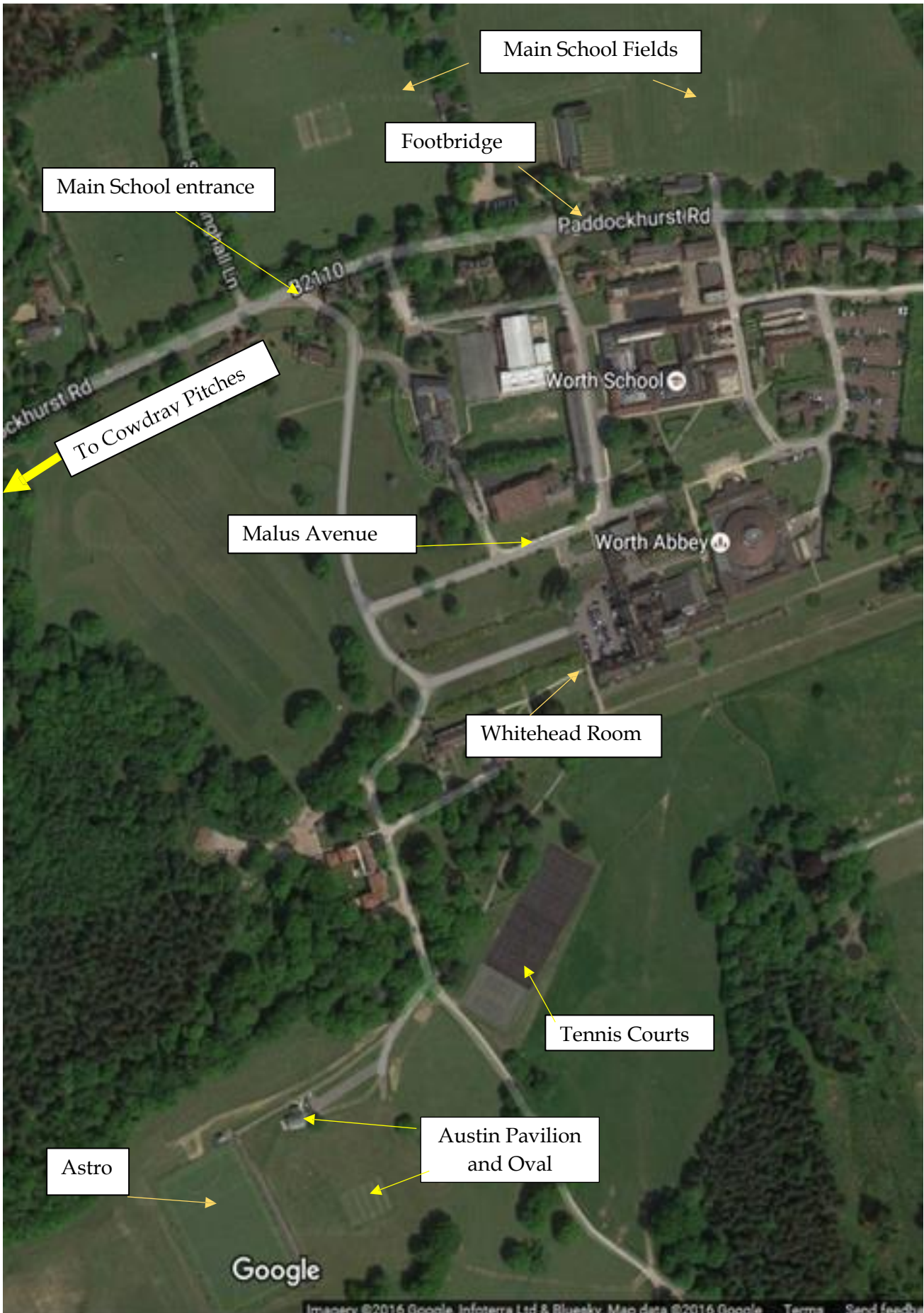
After match hospitality for players will be in the school refectory.

Parents and visitors may park at the front of the Main School building and post-match refreshments will be served in the Whitehead Room.

#### **Safeguarding**

**For reasons of child safeguarding we must ask that all visitors/parents refrain from entering school buildings other than those identified above.**

D A Burton  
Director of Sport



Main School Fields

Footbridge

Main School entrance

Paddockhurst Rd

To Cowdray Pitches

Worth School

Malus Avenue

Worth Abbey

Whitehead Room

Tennis Courts

Astro

Austin Pavilion and Oval

Google